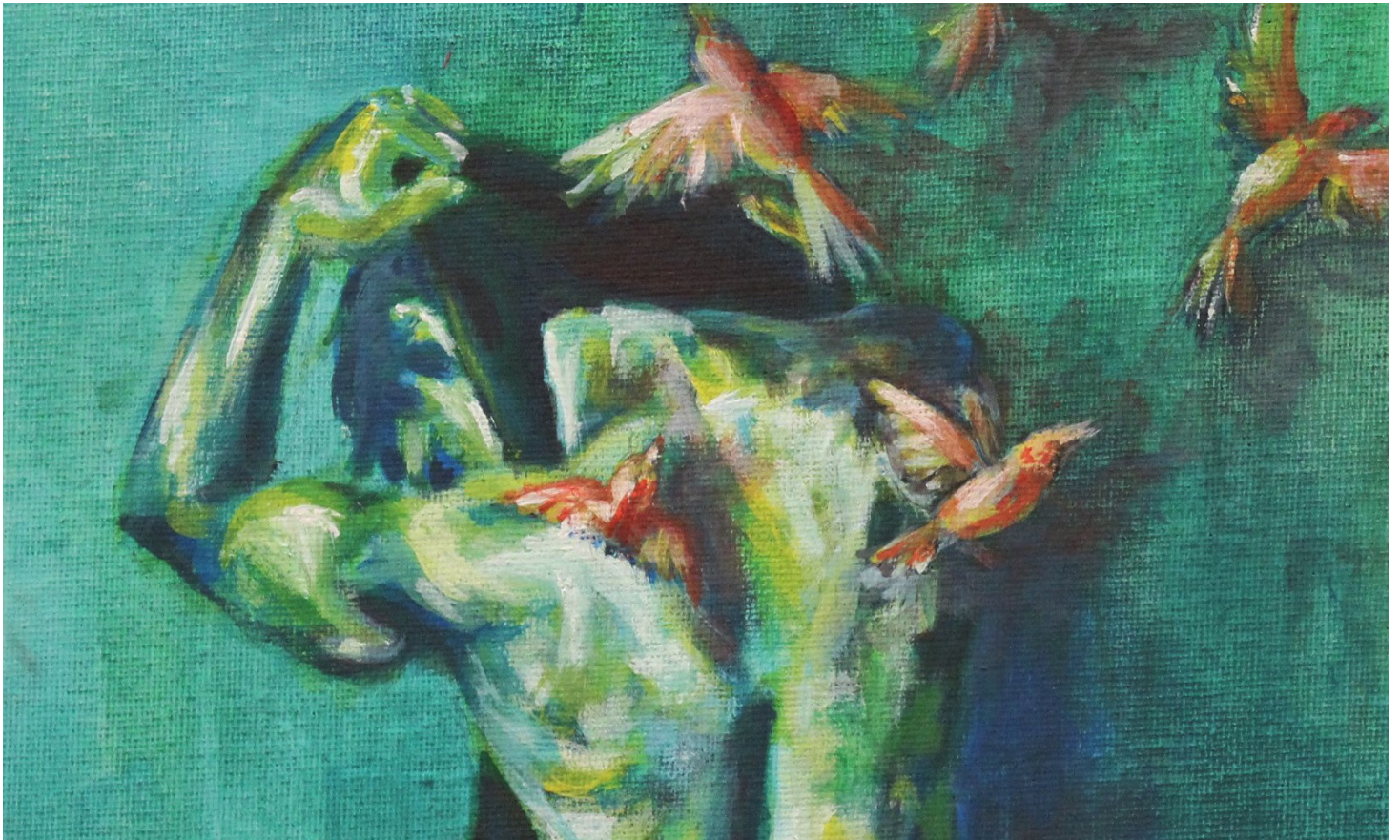


# TEXAS Mental Health CREATIVE ARTS CONTEST



"What's Beneath the Skin" by Emily N., 1st Place, High School Original Artwork (2019)

**DEADLINE EXTENDED! ENTER BY**  
**MARCH 8, 2020**

To learn more and submit art,  
scan the QR code or visit  
[gallery.txsystemofcare.org](https://gallery.txsystemofcare.org)

## ENTRY CATEGORIES

Original Artwork  
Writing  
Photography

## WHO CAN ENTER

**Elementary** Pre-K through grade 5  
**Middle School** Grades 6–8  
**High School** Grades 9–12  
**Adults** Ages 18+

# Theme: *Why Does Mental Health Matter to You?*

## ENTRY RULES & GUIDELINES

### Original Artwork

- ❑ Must be an original artwork that combines drawing, pictures (and words if you wish) to express the contest theme.
- ❑ Materials used may include pencil, ink, charcoal, crayon, markers, pastel, paint, mixed media, collage, graphic design, or similar 2D media.
- ❑ Scanning your physical artwork (a painting, drawing, etc.) will give us the best image quality. If you don't have access to a scanner, it's okay to take a picture of it (just make sure the room is well lit and the photo is not blurry).

### Writing

- ❑ Must be a story, essay or poem based on the contest theme and no longer than 300 words.
- ❑ Must be typed or, if handwritten, must be legible.
- ❑ Ask an adult to review spelling and grammar prior to submission.

### Photography

- ❑ Photos cannot show a person's face.
- ❑ Please submit your photo in a high-resolution format.

## HOW TO ENTER

### Individual Entry

- Use our **online entry form** at: [gallery.txsystemofcare.org/submit/#individual-entry](http://gallery.txsystemofcare.org/submit/#individual-entry)

**NOTE** An artist may submit multiple entries.

**NOTE** Artists under 18 years old require parent or guardian consent to enter. If you're an **adult** submitting on behalf of an artist under 18 and **are not** a parent or guardian, follow the instructions for **GROUP ENTRIES**.

### Group Entries

- Download our **PDF entry form** (available in [English](#) and [Spanish](#)) and have one completed for each artist.

**NOTE** If an artist under 18 would like his or her entry displayed or published for state use, a parent or guardian must sign the consent form to allow use of the participant's work.

- Follow instructions to upload the entries at: [gallery.txsystemofcare.org/submit/#group-entries](http://gallery.txsystemofcare.org/submit/#group-entries)

For questions or accommodations, contact [info@txsystemofcare.org](mailto:info@txsystemofcare.org)

**JUDGING** Judging is based on originality, creativity and how well your entry expresses the contest theme. A team of judges will select the top submissions for each category and grade level. Entries, once submitted, become the property of the Texas Health and Human Services Commission and Texas System of Care, and may be used for the purpose of promoting awareness of mental health issues. Entries may be posted to the HHSC and Texas System of Care websites and used in promotional materials.

**PRIZES** Winners in each age group and category will receive special prizes and have their work recognized in public galleries, including the Texas State Capitol, starting the month of May. Winning submissions will also be published on contest holders' official websites.